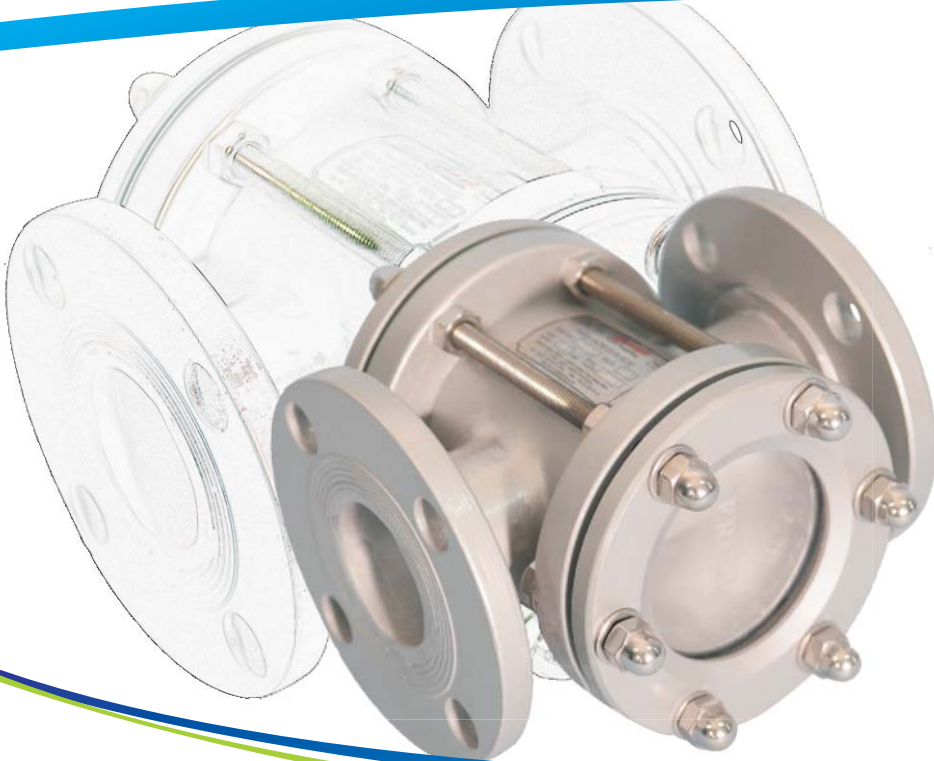


STORAGETECH®

An ERGIL Group Brand



ATEX approved

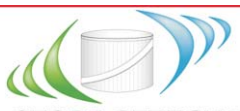


Pipeline Flow Indicator (Sight Glass)

model number 550

Product Description

Model Number 500 sight glass is ideal for you to visually check the presence, color and condition of a liquid. Model Number 500 provides a quick, reliable, and economical way to verify flow and monitor color and clarity in fluid lines. Several sizes, styles and materials are available for a wide range of industrial applications.



STORAGETECH®

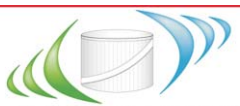
An ERGIL Group Brand

Key Features

- Pressures up to 20 bar
- Temperatures up to 200°C
- High quality special design for extreme conditions.
- Flanged end connection

Manufacturing Materials

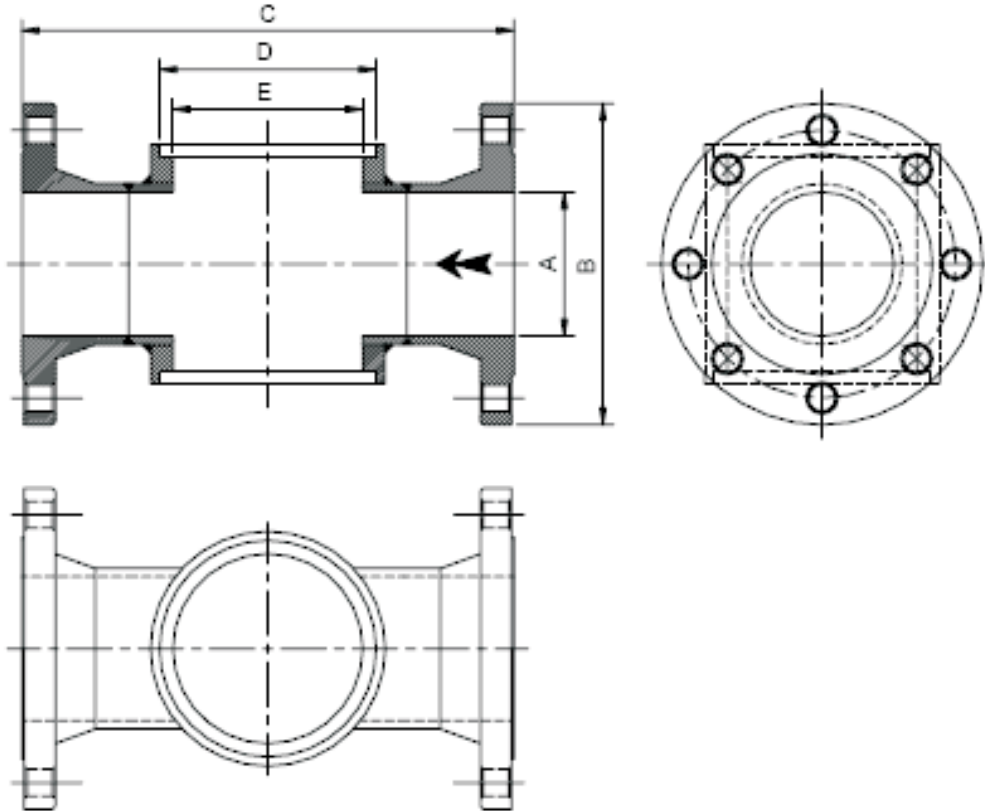
Body Material	Gasket	Flange	Glass
Carbon Steel	P.T.F.E		Flexi glass
304 S.S.			
316 S.S			
Aluminum			



STORAGETECH®

An ERGIL Group Brand

Dimension and Weights



Model	A Nominal Conn. Inch (mm)	B Outside Diameter Inch (mm)	C Overall Length Inch (mm)	D Diameter Inch (mm)	E Diameter I/V Inch (mm)
500	4 (100)	8-1/2 (220)	14 (350)	6(150)	5-1/3 (135)
500	6 (150)	11-1/5 (285)	18 (450)	8-1/4 (210)	6 (150)
500	8 (200)	13-1/3 (340)	23-1/2 (600)	11 (275)	10-1/4 (260)
500	10 (254)	16 (406.4)	27 (695)	11-3/4 (298)	10-1/2 (268)
500	12 (304.8)	26-1/3 (670.5)	29-1/2 (750)	11-7/8 (300)	10-1/3 (265)
500	14 (336.5)	21 (533.4)	33-1/2 (850)	11-7/8 (300)	10-1/4 (260.4)

Dimension and Weights