



STORAGETECH®

An ERGIL Group Brand

ATEX approved



MANHOLE COVER

model number 400

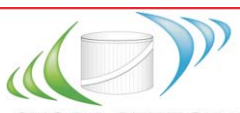


Product Description

STORAGETECH® Model Number 410 Manhole Covers is offered for almost every application such as industrial tanks, mobile and stationary storage vessels, mixing tanks, large diameter conveyors, and bulk containers. Model Number 410 defines an opening which allows access to the interior of the tanker or trailer for filling or cleaning of the tank. They are typically mounted to a flange, which connects the vapor space of a storage tank, and locking systems secure the tank against external factors.

Product Benefits

- StorageTech PVV Model 410 prevents evaporation losses.
- Special locking system protects the liquid and provides safety for your storage facility
- Protects environment. PVV prevents green house gasses from mixing the atmosphere, and minimizes the product odors around the surrounding area.



STORAGETECH®

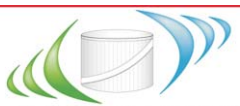
An ERGIL Group Brand

Key Features

- StorageTech PVV Model 400 is made of corrosion resistant materials with a long life duration.
- All emergency relief vents are tested and inspected after manufacturing.
- Easy to install. You do not need a special tool or experience to install the StorageTech PVV Model 400.
- StorageTech PVV Model 400 comes with the paint color you choose.

Manufacturing Materials

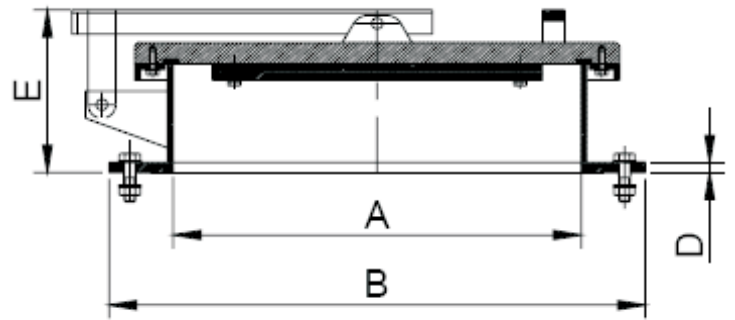
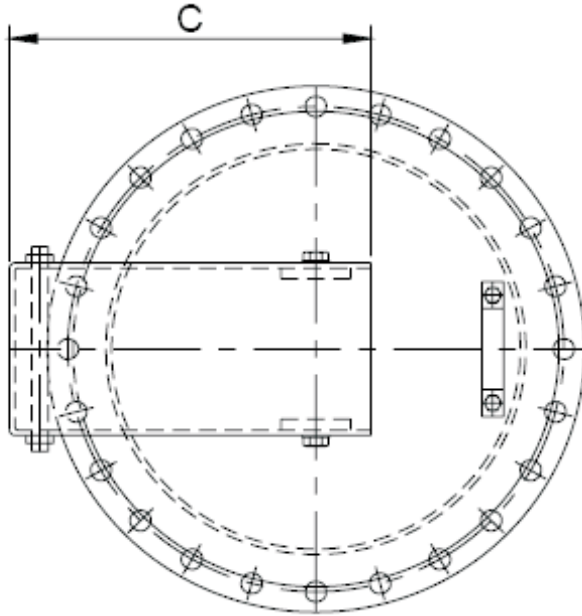
Base	Arm	Disk	Seal	Seal Support
Carbon Steel	Carbon Steel	Carbon Steel	Buna-N	Carbon Steel
304 S.S.	304 S.S.	304 S.S.	FEP Teflon	304 S.S.
316 S.S	316 S.S	316 S.S	Viton	316 S.S
		Aluminum		Aluminum



STORAGETECH®

An ERGIL Group Brand

Dimension and Weights



Model	A Size Inch (mm)	B ANSI Flange O.D. Inch (mm)	C Overall Length Inch (mm)	D Flange Thickness Inch (mm)	D Height Inch (mm)	C.S. Unit Weight Lb. (Kg)	S.S. Unit Weight Lb. (Kg)
400	3 (120)	7.5 (190.5)	5 (125)	1/3 (109)	5.5 (143)	14 (6)	14 (6)
400	16 (406.4)	23.5 (596)	14 (365)	1 (25)	8 (200)	94 (43)	97 (44)
400	18 (457)	23.5 (596.9)	14 (365)	1 (25)	9.5 (246)	110 (50)	118 (54)
400	20 (508)	27.5 (698.5)	19 (490)	1 (25)	9.5 (246)	119 (54)	127 (58)
400	24 (609.6)	32 (813)	20.5 (525)	1 (25)	9.5 (246)	176 (80)	186 (84)
400	30 (762)	38 (975)	25.5 (650)	1-1/3 (36)	12 (300)	278 (125)	286.5 (129)

Dimension and Weights

