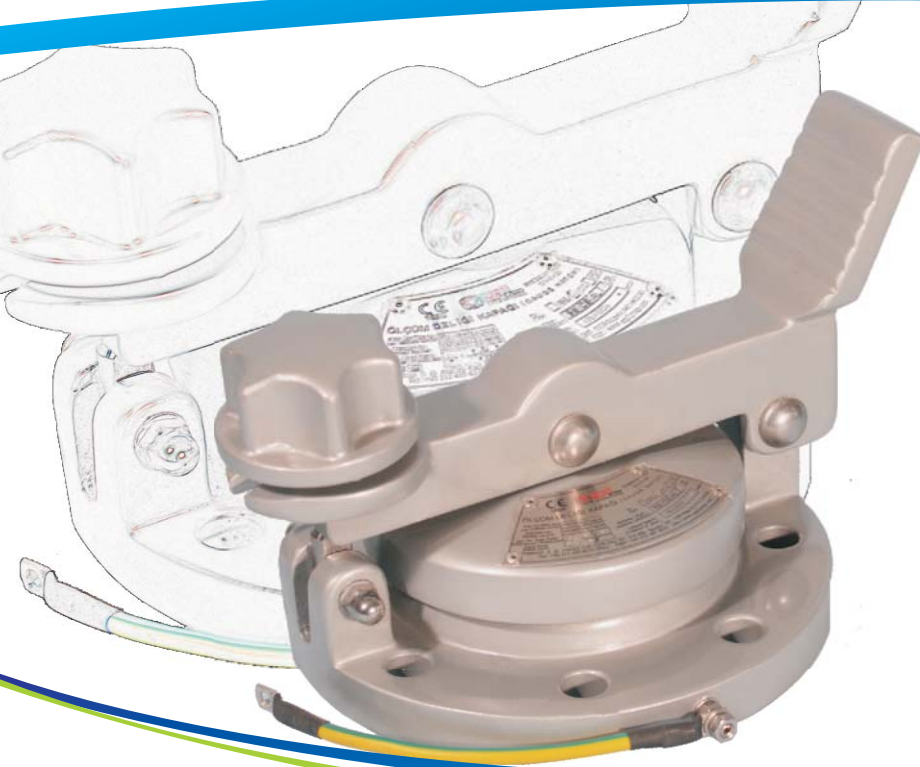


STORAGETECH®

An ERGIL Group Brand



ATEX approved



LOCKING TYPE GAUGE HATCH

model number 210

Product Description

STORAGETECH® Gauge Hatch Model Number 210 is a safety device that has a cover structure that incorporates a pallet/diaphragm combination and that is cooperatively associated with a pressure responsive liquid seal subassembly. The lock system prevents unauthorized access to the storage tank. They are typically mounted to a flange, which connects the vapor space of a storage tank. Gauge hatches can be set to your specifications so that the pallet assemblies in the housings open when specific pressure and vacuum levels are reached.

Product Benefits

- StorageTech gauge hatch prevents evaporation losses.
- Protects environment. Model Number 210 prevents green house gasses from mixing the atmosphere, and minimizes the product odors around the surrounding area.
- Gauge Hatch provides safety for your storage facility. Model Number 210 protects your storage tank.
- Provides tank access where manual level gauging, temperature measurement or sampling is required.
- Lockable cover prevents unauthorized access to the storage tank.



STORAGETECH®

An ERGIL Group Brand

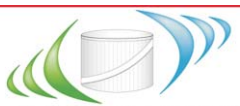
Key Features

- StorageTech Model Number 210 provides Teflon seal for a longer service period, and reduce the spare cost. Locking-systems is durable against petro chemical vapors.
- Non-sparking design.
- Foot pedal helps you to open the cover without using your hands, and lockable cover
- Easy to install. You do not need a special tool or experience to install the StorageTech Model 210.
- StorageTech Model 210 comes with the paint color you choose.

Manufacturing Materials

Housing	Lid	Arm	Handle	Weights	Gaskets
Carbon Steel	Carbon Steel	Carbon Steel	Carbon Steel	Zinc	Neoprone
304 S.S.	304 S.S.	304 S.S.	304 S.S.	304 S.S.	
316 S.S	316 S.S	316 S.S	316 S.S	316 S.S	
Aluminum	Aluminum	Aluminum	Aluminum	Aluminum	

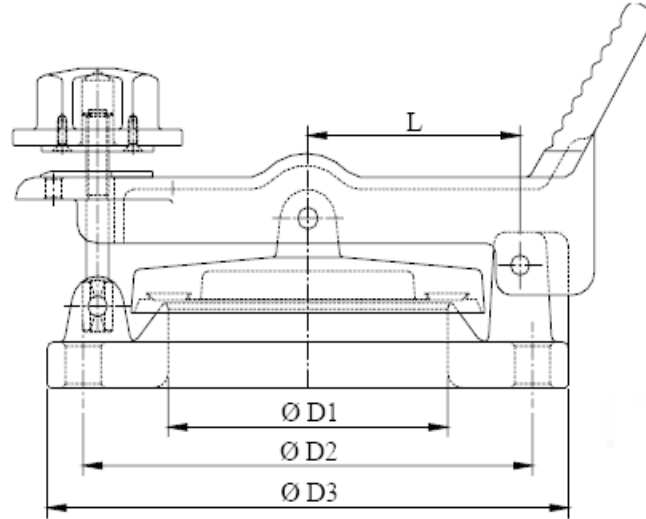




STORAGETECH®

An ERGIL Group Brand

Dimension and Weights



Model	Size (Inch)	D1 (mm)	D2 (mm)	D3 (mm)	L (mm)
210	3"	83	152	195	86
210	4"	102	190	226	96
210	6"	150	242	280	114
210	8"	198	295	338	155
210	10"	254.5	362	406.4	194

Dimension and Weights