

STORAGETECH®

An ERGIL Group Brand

ATEX approved



EMERGENCY RELIEF VENT

model number 400

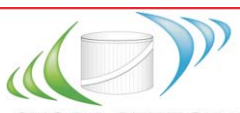


Product Description

STORAGETECH® Model Number 400 Emergency Relief Vent is a safety device that operates during the emergency moments when regular pressure vacuum vents cannot function. Model Number 400 protects the tank against the incidents of rupture or internal pressures that are caused by fire exposure and so forth. They also provide easy access into the tank. They are typically mounted to a flange, which connects the vapor space of a storage tank. Vents can be set to your specifications so that the housings open when specific pressure and vacuum levels are reached.

Product Benefits

- StorageTech PVV Model 400 prevents evaporation losses.
- Protects environment. PVV prevents green house gasses from mixing the atmosphere, and minimizes the product odors around the surrounding area.
- PVV provides safety for your storage facility. PVV protects your storage tank from explosions that are caused by sudden pressure and vacuum change.
- Provide easy access into the tank.



STORAGETECH®

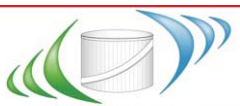
An ERGIL Group Brand

Key Features

- StorageTech PVV Model 400 is made of corrosion resistant materials with a long life duration.
- All emergency relief vents are tested and inspected after manufacturing.
- Easy to install. You do not need a special tool or experience to install the StorageTech PVV Model 400.
- StorageTech PVV Model 400 comes with the paint color you choose.

Manufacturing Materials

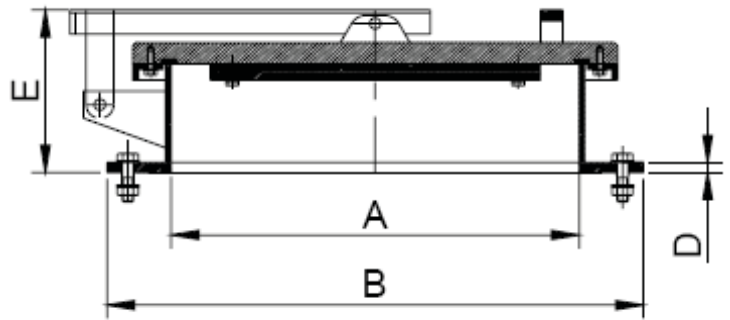
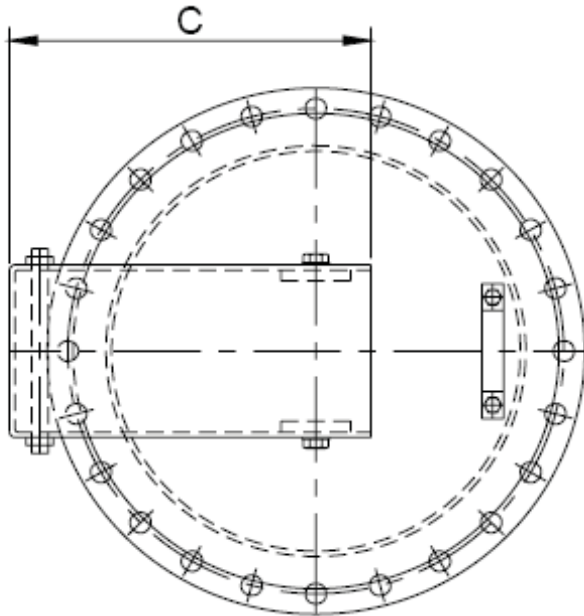
Base	Arm	Disk	Seal	Seal Support
Carbon Steel	Carbon Steel	Carbon Steel	Buna-N	Carbon Steel
304 S.S.	304 S.S.	304 S.S.	FEP Teflon	304 S.S.
316 S.S	316 S.S	316 S.S	Viton	316 S.S
		Aluminum		Aluminum



STORAGETECH®

An ERGIL Group Brand

Dimension and Weights



Model	A Size Inch (mm)	B ANSI Flange O.D. Inch (mm)	C Overall Length Inch (mm)	D Flange Thickness Inch (mm)	D Height Inch (mm)	C.S. Unit Weight Lb. (Kg)	S.S. Unit Weight Lb. (Kg)
400	3 (120)	7.5 (190.5)	5 (125)	1/3 (109)	5.5 (143)	14 (6)	14 (6)
400	16 (406.4)	23.5 (596)	14 (365)	1 (25)	8 (200)	94 (43)	97 (44)
400	18 (457)	23.5 (596.9)	14 (365)	1 (25)	9.5 (246)	110 (50)	118 (54)
400	20 (508)	27.5 (698.5)	19 (490)	1 (25)	9.5 (246)	119 (54)	127 (58)
400	24 (609.6)	32 (813)	20.5 (525)	1 (25)	9.5 (246)	176 (80)	186 (84)
400	30* (762)	38 (975)	25.5 (650)	1-1/3 (36)	12 (300)	278 (125)	286.5 (129)

*Other dimensions can be produced by customer order.

Dimension and Weights

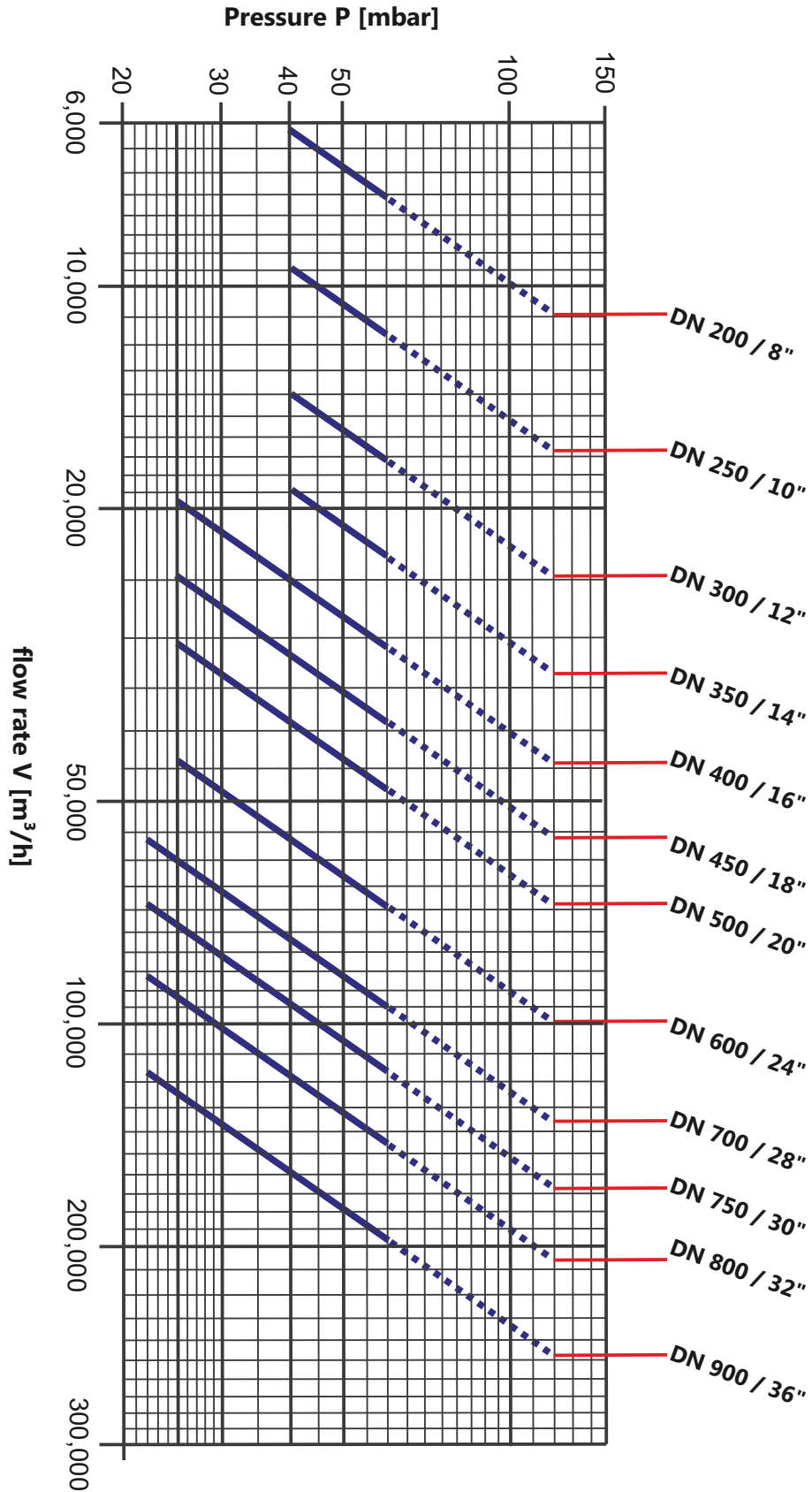




STORAGETECH®

An ERGIL Group Brand

Flow capacity



*According to ISO 6350 (23°C, 1bar) and API 2000



www.ergil-storagetech.com